



# FIRE PUMP SYSTEMS

Dimensions  
In-Line 1580 Series  
1.5x1.5x7F - 35, 50 & 75 GPM

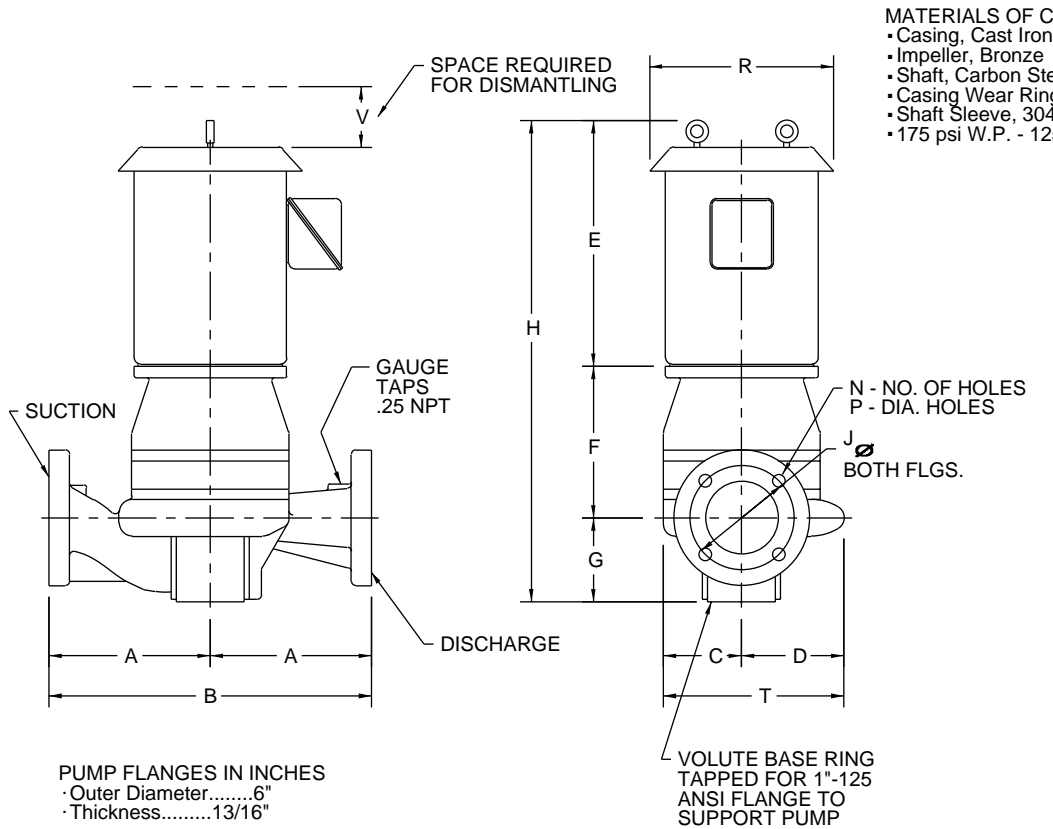
A-C Pump



FP 2.5

Page 301

Dec. 1998  
Supersedes all  
previous issues



**MATERIALS OF CONSTRUCTION:**

- Casing, Cast Iron
- Impeller, Bronze
- Shaft, Carbon Steel
- Casing Wear Ring, Bronze
- Shaft Sleeve, 304 Stainless Steel
- 175 psi W.P. - 125 ANSI flanges

PUMP FLANGES IN INCHES  
· Outer Diameter.....6"  
· Thickness.....13/16"

VOLUTE BASE RING  
TAPPED FOR 1"-125  
ANSI FLANGE TO  
SUPPORT PUMP

NOTE : ALL DIMENSIONS ARE SHOWN IN INCHES.

MOTOR FRAME	HP FOR 3 PH. MOTORS	A	B	C	D	(MAX) E	STD F	G	(MAX) STD H	125 ANSI			R	(MAX) **S	T	(MIN) V
										J	N	P				
145	3	8.0	16.0	4.6	4.8	12.6	7.8	4.4	24.8	3.9	4.0	0.6	9.8	1.5	9.4	4.0
182	5	8.0	16.0	4.6	4.8	15.3	7.8	4.4	27.5	3.9	4.0	0.6	11.8	1.0	9.4	4.0
184	7.5	8.0	16.0	4.6	4.8	15.3	7.8	4.4	27.5	3.9	4.0	0.6	11.8	1.0	9.4	4.0

\*\* For TEFC Motors add S dimension to dimension for E & H.

NOT FOR CONSTRUCTION, INSTALLATION OR APPLICATION PURPOSES UNLESS CERTIFIED.							
FOR						APPROVAL UI <input type="checkbox"/> ULC <input type="checkbox"/>	
CUST. ORDER NO.				IDENT. NO.			
PUMP DATA	SIZE	TYPE	CURVE NO.	GPM	HEAD	ROTATION	FLANGES
	CW						
MOTOR DATA	HP	RPM	VOLTS	PHASE	HERTZ	FRAME SIZE	ENCLOSURE
SHOP ORDER			CERTIFIED BY			DATE	

SA-60977