



# FIRE PUMP SYSTEMS

Dimensions  
In-Line 1580 Series  
2.5x2.5x9.5F - 50, 100, 150, 200 & 250 GPM

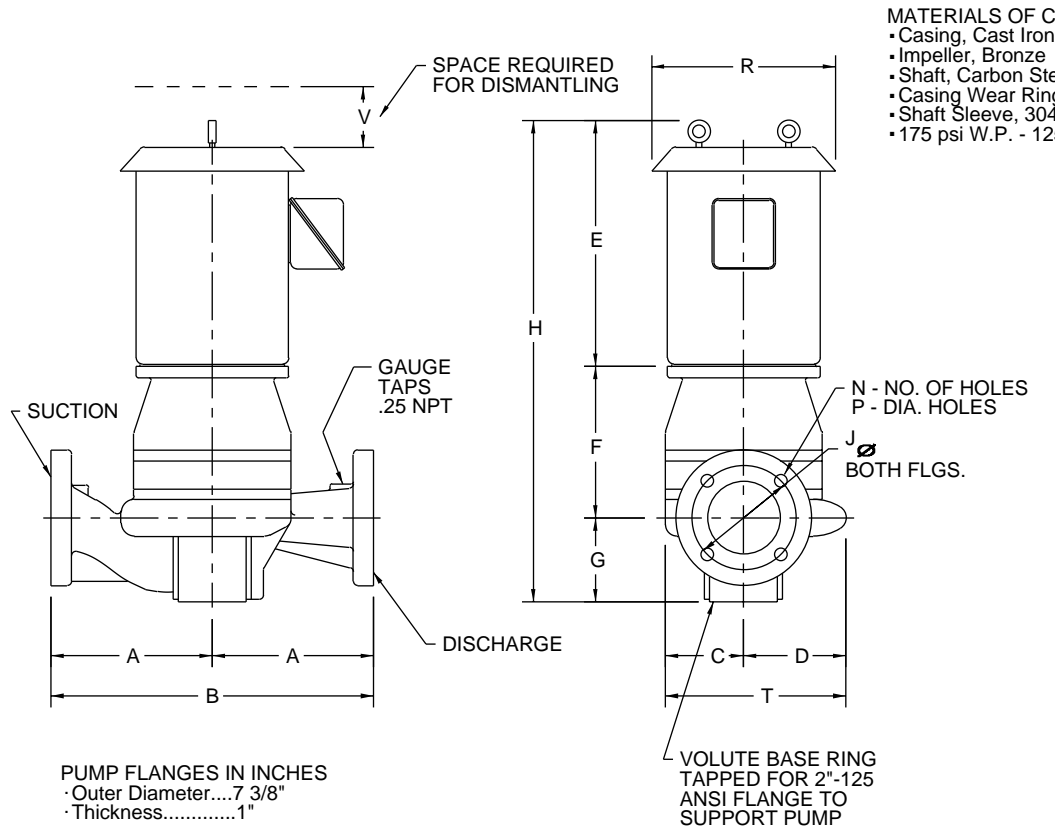
A-C Pump



FP 2.5

Page 304

Dec. 1998  
Supersedes all previous issues



MOTOR FRAME	HP FOR 3 PH. MOTORS	A	B	C	D	(MAX) E	STD F	G	(MAX) STD H	125 ANSI			R	(MAX) **S	T	(MIN) V
										J	N	P				
256	25	10.8	21.5	6.4	7.1	24.1	8.7	6.0	38.9	5.5	4.0	0.8	17.0	---	13.5	4.8
284	30	10.8	21.5	6.4	7.1	23.6	8.7	6.0	38.4	5.5	4.0	0.8	16.1	4.6	13.5	4.8
286	40	10.8	21.5	6.4	7.1	25.1	8.7	6.0	39.9	5.5	4.0	0.8	16.1	4.6	13.5	4.8
324	50	10.8	21.5	6.4	7.1	26.0	8.7	6.0	40.8	5.5	4.0	0.8	18.8	5.4	13.5	4.8

\*\* For TEFC Motors add S dimension to dimension for E & H.

NOT FOR CONSTRUCTION, INSTALLATION OR APPLICATION PURPOSES UNLESS CERTIFIED.							
FOR				APPROVAL UI <input type="checkbox"/> ULC <input type="checkbox"/>			
CUST. ORDER NO.				IDENT. NO.			
PUMP DATA	SIZE	TYPE	CURVE NO.	GPM	HEAD	ROTATION	FLANGES
	CW						
MOTOR DATA	HP	RPM	VOLTS	PHASE	HERTZ	FRAME SIZE	ENCLOSURE
SHOP ORDER			CERTIFIED BY			DATE	

SA-60980