



FIRE PUMP SYSTEMS

Dimensions
In-Line 1580 Series
3x3x7F - 200, 250 & 300 GPM

A-C Pump

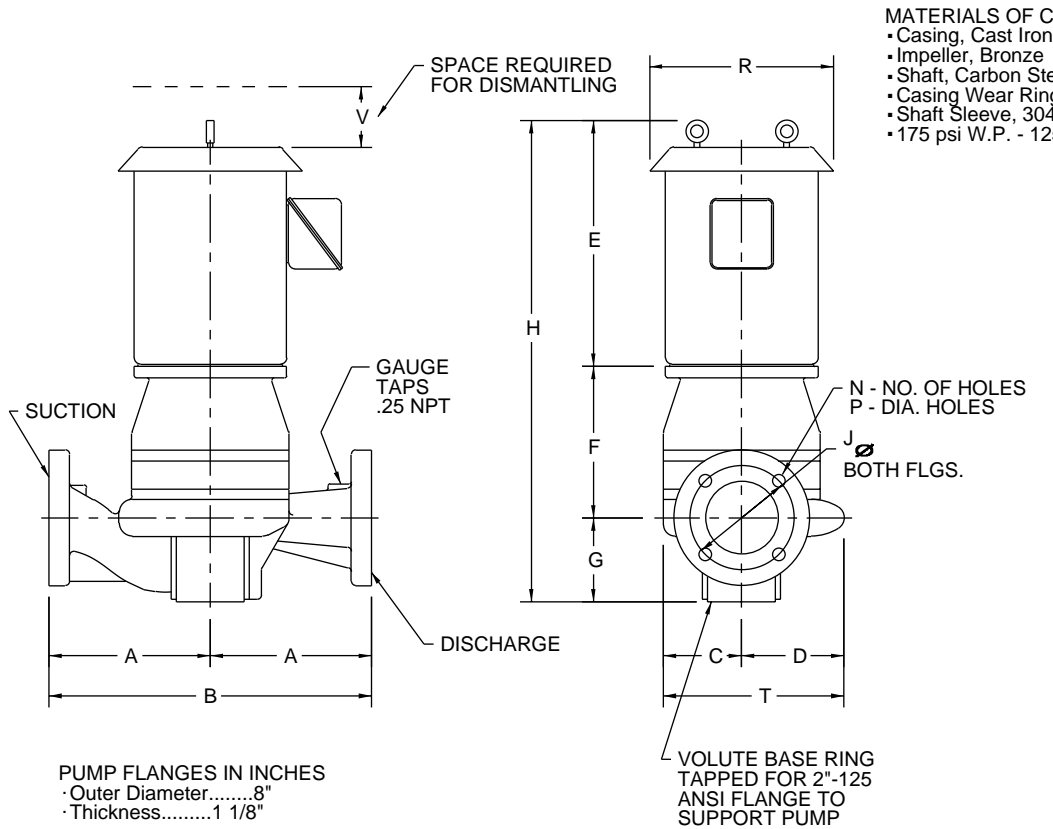


FP 2.5

Page 303

Dec. 1998

Supersedes all previous issues



MATERIALS OF CONSTRUCTION:

- Casing, Cast Iron
- Impeller, Bronze
- Shaft, Carbon Steel
- Casing Wear Ring, Bronze
- Shaft Sleeve, 304 Stainless Steel
- 175 psi W.P. - 125 ANSI flanges

PUMP FLANGES IN INCHES
· Outer Diameter.....8"
· Thickness.....1 1/8"

NOTE : ALL DIMENSIONS ARE SHOWN IN INCHES.

MOTOR FRAME	HP FOR 3 PH. MOTORS	A	B	C	D	(MAX) E	STD F	G	(MAX) STD H	125 ANSI			R	(MAX) **S	T	(MIN) V
										J	N	P				
213	10	9.5	19.0	5.3	6.3	19.3	8.8	5.5	33.5	6.0	4.0	0.8	14.0	---	11.5	4.5
215	15	9.5	19.0	5.3	6.3	19.3	8.8	5.5	33.5	6.0	4.0	0.8	14.0	---	11.5	4.5
254	20	9.5	19.0	5.3	6.3	24.1	8.8	5.5	38.4	6.0	4.0	0.8	17.0	---	11.5	4.5
256	25	9.5	19.0	5.3	6.3	24.1	8.8	5.5	38.4	6.0	4.0	0.8	17.0	---	11.5	4.5

** For TEFC Motors add S dimension to dimension for E & H.

NOT FOR CONSTRUCTION, INSTALLATION OR APPLICATION PURPOSES UNLESS CERTIFIED.							
FOR				APPROVAL UI <input type="checkbox"/> ULC <input type="checkbox"/>			
CUST. ORDER NO.				IDENT. NO.			
PUMP DATA	SIZE	TYPE	CURVE NO.	GPM	HEAD	ROTATION	FLANGES
	CW						
MOTOR DATA	HP	RPM	VOLTS	PHASE	HERTZ	FRAME SIZE	ENCLOSURE
SHOP ORDER		CERTIFIED BY				DATE	

SA-60979