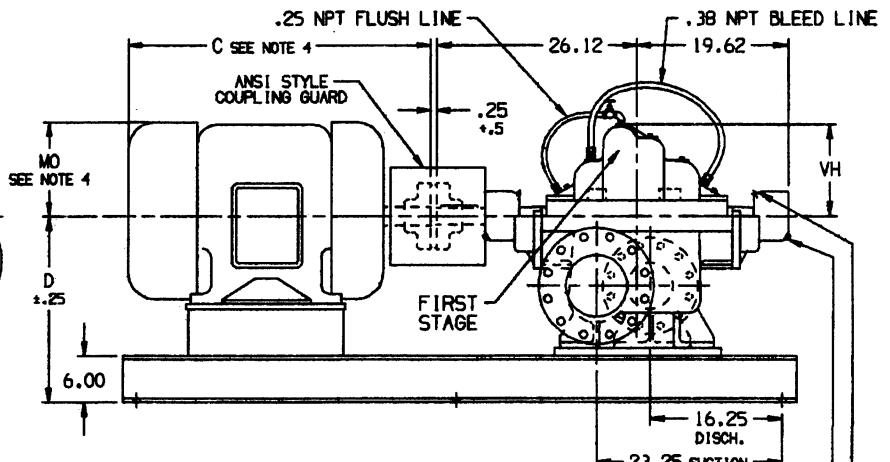
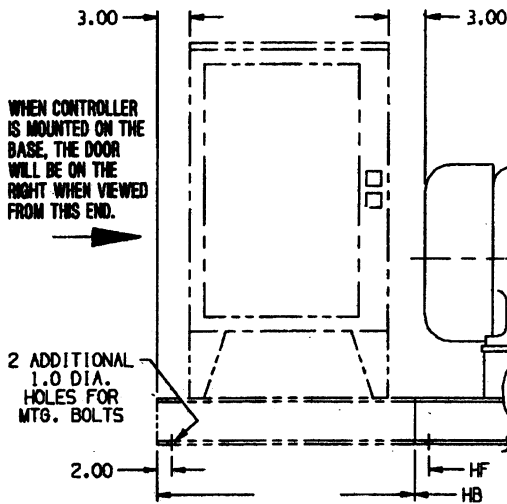
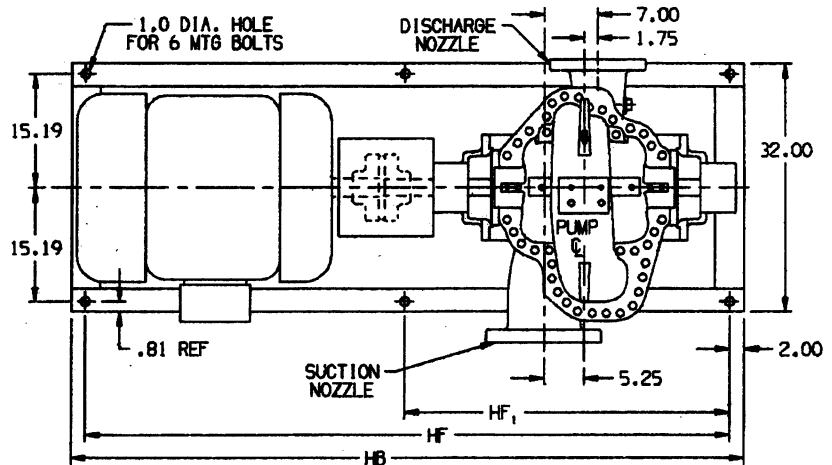




September, 2000

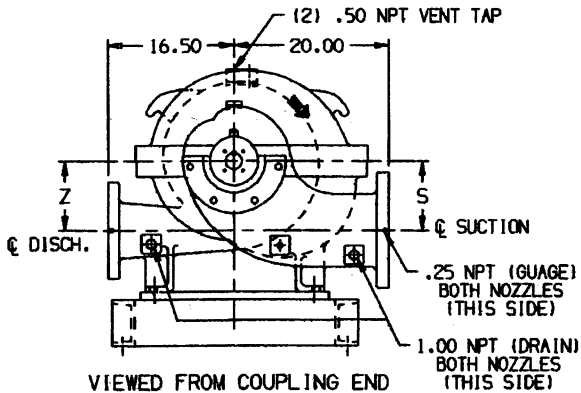
Supersedes February, 1996

MOTOR FRAMES	C	HB	HF	HF ₁	MO	APPROX. WEIGHT #
324-326	29.2	76.00	72.00	36.00	8.6	590
364-365	31.9	80.00	76.00	38.00	9.2	800
404-405	37.9	86.00	82.00	41.00	10.4	1200
444-445	44.2	92.00	88.00	44.00	11.8	1500
447	47.6	94.00	90.00	45.00	11.8	1900
449	52.6	100.00	96.00	48.00	12.1	2200
5007S	44.6	92.00	88.00	44.00	13.4	2200
5009S	50.5	98.00	94.00	47.00	12.5	2250
5809S	65.5	112.00	108.00	54.00	15.8	5200
5811S	73.5	120.00	116.00	58.00	15.8	5700



PUMP SIZE	D	VH	S	Z	APPRX WT
8x6x14F	23.75	11.88	9.00	9.00	1450#
8x6x18F	25.75	14.62	11.00	11.00	1750#

.50 NPT DRAIN PLUG (BOTH HOUSINGS)
.12 NPT GREASE FITTING (BOTH HOUSINGS)



NOTES:

- ALL DIMENSIONS IN INCHES WITH ±.125" TOLERANCE. UNLESS OTHERWISE SPECIFIED.
- POSSIBLE SUCTION/DISCHARGE FLANGE COMBINATIONS ARE 125#/1250#, 250#/1250# FOR 8X6X14F & 8X6X18F, 125#/800#, OR 250#/800# FOR 8X6X14F ONLY. ALL FLANGES FLAT FACED PER ANSI B16.1 HOLES STADDLE C.
- BASEPLATE SETTING (BEFORE PIPING), GROUTING PROCEDURES AND FINAL ALIGNMENT MUST BE IN ACCORDANCE WITH ITT A-C PUMP RECOMMENDED INSTALLATION PROCEDURES OUTLINED IN THE INSTRUCTION MANUAL ASSOCIATED WITH THIS PUMP TYPE.
- NEMA FRAMES CAN BE T OR TS. MOTOR DIMENSIONS ARE APPROXIMATE FOR GIVEN FRAME. CONSULT FACTORY IF SPACE IS LIMITED.
- BOTH SUCTION AND DISCHARGE PIPES MUST BE SUPPORTED INDEPENDENTLY NEAR THE PUMP TO REDUCE STRAIN ON THE PUMP CASING. ALSO, EXPANSION JOINTS, IF USED, MUST NOT EXERT FORCE ON CASING.
- ITT A-C PUMPS CONTRACT ENDS AT SUCTION AND DISCHARGE FLANGES. NO BOLTS, NUTS, OR GASKETS FURNISHED.

NOT FOR CONSTRUCTION, INSTALLATION OR APPLICATION PURPOSES UNLESS CERTIFIED.

CERTIFIED FOR:								
CUSTOMER ORDER NO:			IDENTIFICATION NO:				FLANGES	
PUMP DATA	SIZE	MODEL	CURVE NO.	GPM	HEAD(FT.)	ROTATION	SUCTION	DISCHARGE
			150				CW	
MOTOR DATA	FRAME SIZE	HP	RPM	VOLTS	PHASE	HERTZ	ENCLOSURE	
APPROX. WEIGHTS	PUMP WEIGHT	BASE WEIGHT	COUPLING WEIGHT	MOTOR WEIGHT	TOTAL WEIGHTS			
SHOP ORDER:			CERTIFIED BY:			DATE		