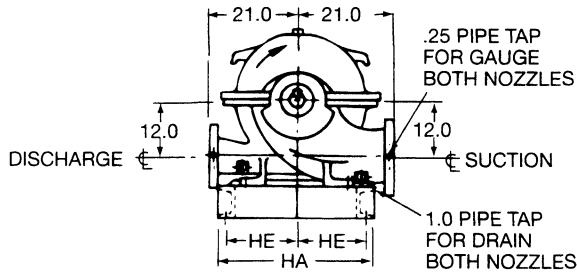


CCW ROTATION VIEWED FROM COUPLING END



CW ROTATION WHEN VIEWED FROM COUPLING END

MOTOR FRAMES	C	HA	HB	HE	HF	HF ₁	MO
445 TS	40.5	30.0	96.0	14.19	92.0	46.0	11.8
447 TS	44.0	30.0	96.0	14.19	92.0	46.0	11.8
449 TS	44.6	30.0	96.0	14.19	92.0	46.0	11.8
503 US	36.0	30.0	96.0	14.19	92.0	46.0	14.0
504 US	41.8	30.0	96.0	14.19	92.0	46.0	14.0

NOTES

- All Dimensions are in inches.
- Flanges are 125# suction and 250# discharge per ANSI B16.1.
- Baseplate setting (before piping), grouting procedures and final alignment must be in accordance with ITT A-C Fire Pump Systems recommended procedures outlined in the Instruction Manual associated with this pump type.
- Motor dimensions are approximate for a given NEMA frame. Consult factory if space is limited.
- Both suction and discharge pipes must be supported independently near the pump to reduce strain on the pump casing. Also expansion joints, if used, must not exert force on casing.

NOT FOR CONSTRUCTION, INSTALLATION OR APPLICATION PURPOSES UNLESS CERTIFIED.									
CERTIFIED FOR:							APPROVAL		UL <input type="checkbox"/> FM <input type="checkbox"/> ULC <input type="checkbox"/>
CUSTOMER ORDER NO:			IDENTIFICATION NO:				FLANGES		
PUMP DATA	SIZE	MODEL	CURVE NO.	GPM	HEAD (FT)	ROTATION	SUCTION	FLANGES	
	HP	RPM	VOLTS	PHASE	HERTZ	FRAME SIZE	ENCLOSURE		
SHOP ORDER:			CERTIFIED BY:				DATE		