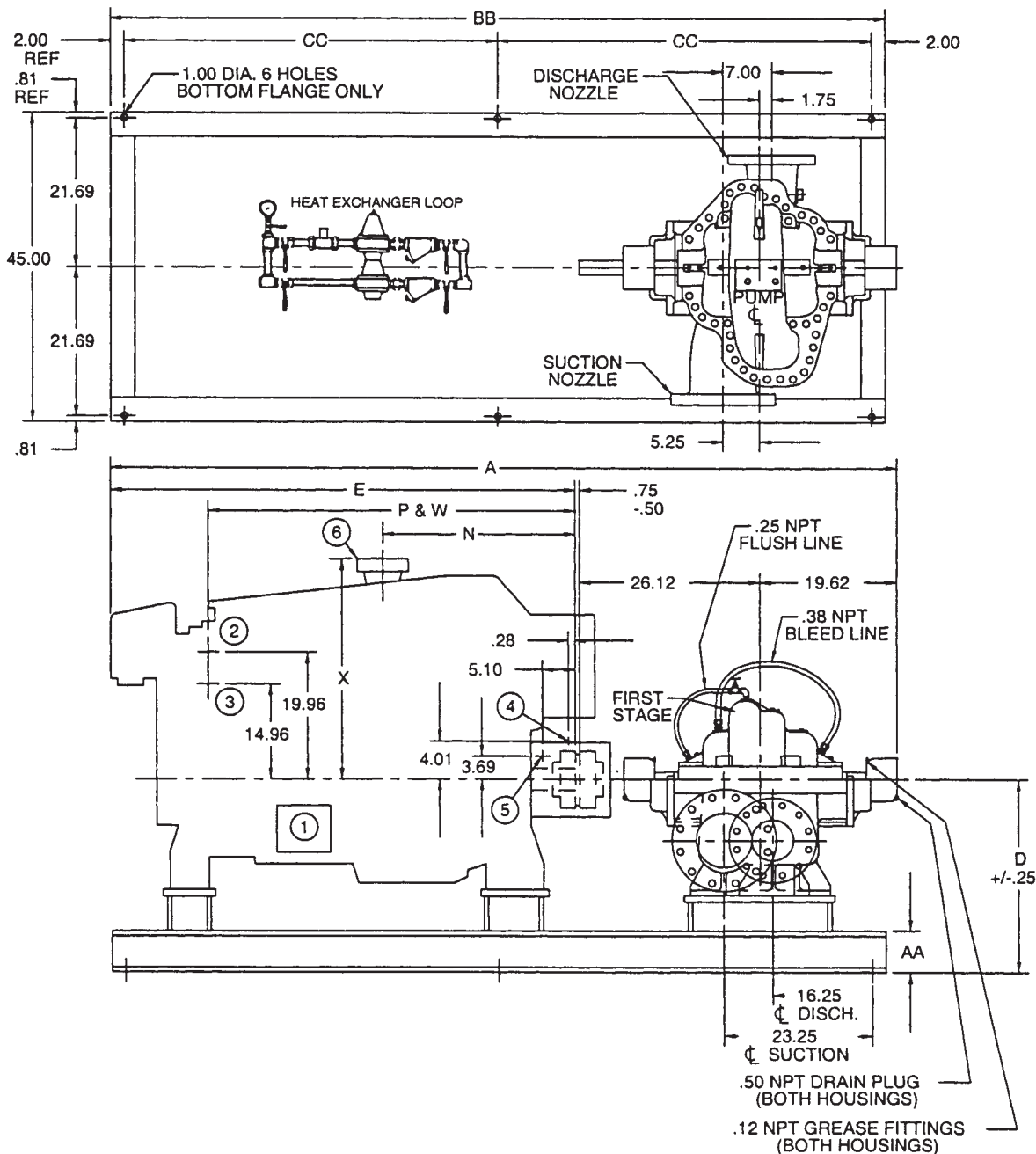


A-C Fire Pump Systems

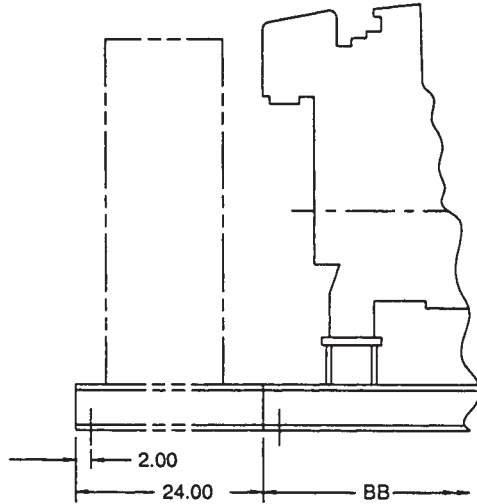


FIRE PUMP SYSTEMS
 Dimensions – Caterpillar Engines
 Models 3406B-DITA, 3412-DIT
 8x6x18F 8200 Series Pump
 Clockwise Rotation

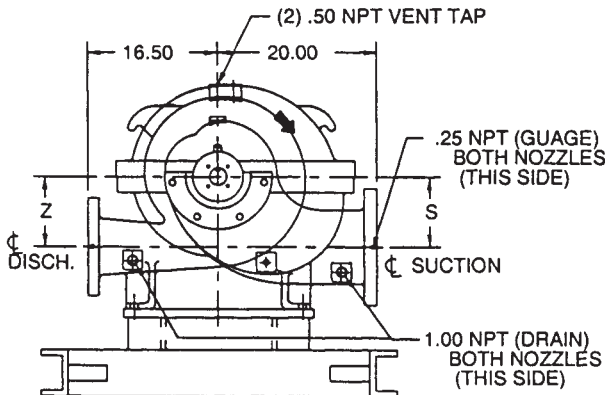


NOT FOR CONSTRUCTION, INSTALLATION OR APPLICATION PURPOSES UNLESS CERTIFIED.								
CERTIFIED FOR:							UL FM ULC APPROVAL <input type="checkbox"/> <input type="checkbox"/> <input type="checkbox"/>	
CUSTOMER ORDER NO:			IDENTIFICATION NO:				FLANGES	
PUMP DATA	SIZE	MODEL	CURVE NO.	GPM	HEAD (FT.)	ROTATION	SUCTION	DISCHARGE
		150				CW		
ENGINE DATA	MAKE	MODEL	HP	RPM	VOLTAGE	POLARITY	MAX ALTITUDE	
	CATERPILLAR					NEG.		
SHOP ORDER:			CERTIFIED BY:		TOTAL WEIGHT		DATE	

PUMP	ENGINE	A	D	E	N	P	S & Z	W	X	AA	BB	CC	APPROX. PUMP WT.	APPROX. ENGINE WT.
8x6x18F	3408B-DITA	111.7	32.00	65.2	23.29	60.82	11.00	58.16	44.6	6.0	114.0	55.0	1750	3740
8x6x18F	3412-DIT	125.1	34.0	78.6	19.87	74.18	11.00	71.52	44.6	8.0	126.0	61.0	1750	5020



OPTIONAL: BASE MOUNTED CONTROLLER IS MOUNTED WITH DOOR ON REAR. DOOR IS HINGED ON LEFT. ADD 25" TO BB (LENGTH OF BASE) AND 2 ADDITIONAL 1.0 DIAMETER HOLES



CW ROTATION VIEWED FROM COUPLING END

NOTES

- All Dimensions are inches with $\pm .125"$ tolerance unless otherwise specified.
- Suction and discharge connections per ANSI B16.1. Holes in flanges straddle C .
- Baseplate setting (before piping), grouting procedures and final alignment must be in accordance with ITT A-C Fire Pump Systems recommended procedures outlined in the Instruction Manual associated with this pump type.
- Both suction and discharge pipes must be supported independently near the pump to reduce strain on the pump casing. Also expansion joints, if used must not exert force on casing.
- Coupling guard to meet ANSI/OSHA requirements.
- Heater voltage requirement: 120/240 VAC 3000 Watt. Do not energize until engine coolant has been installed.
- These units are available in both standard and high working pressures. Unit is denoted with an "H" prefix when specifying high working pressure. Example H6x4x12F. Refer to engineering data for actual working pressure values. High pressure pumps have 250 F.F. flanges per ANSI B16.1 unless noted.

Item No.	Description	Engine Model	
		3408 ¹	3412 ²
①	Heater Junction Box	(See Note 6)	(See Note 6)
②	Raw Water-Outlet	2.0 NPT	2.0 NPT
③	Raw Water-Inlet	2.0 NPT	2.0 NPT
④	Fuel Supply Conn.	.38 NPT*	.38 NPT*
⑤	Fuel Return Conn.	.38 NPT*	.38 NPT*
⑥	Exhaust Outlet Conn.	See footnote below	See footnote below

* Far side

1. 3408 Wet - 6" Cat. Fig.; 3408 Dry - 8" Cat. Fig.

2. 3412-DIT Dry - 8" Cat. Fig.; 3412-DIT Wet - 8" NPT; 3412-DITA Dry - 6" Cat. Fig.; 3412-DITA Wet - 8" NPT