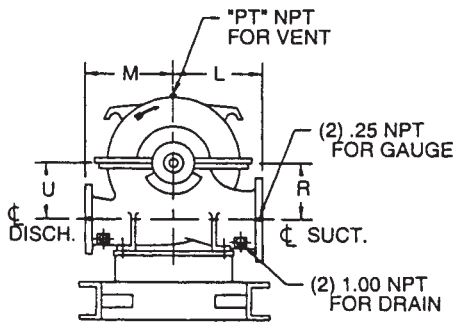
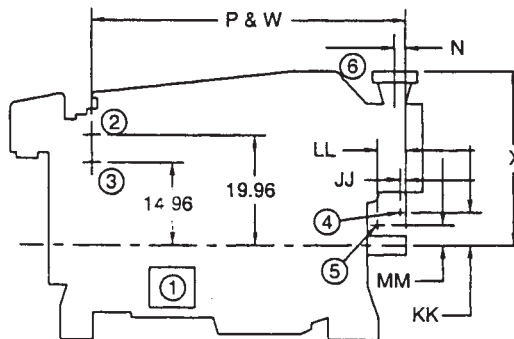
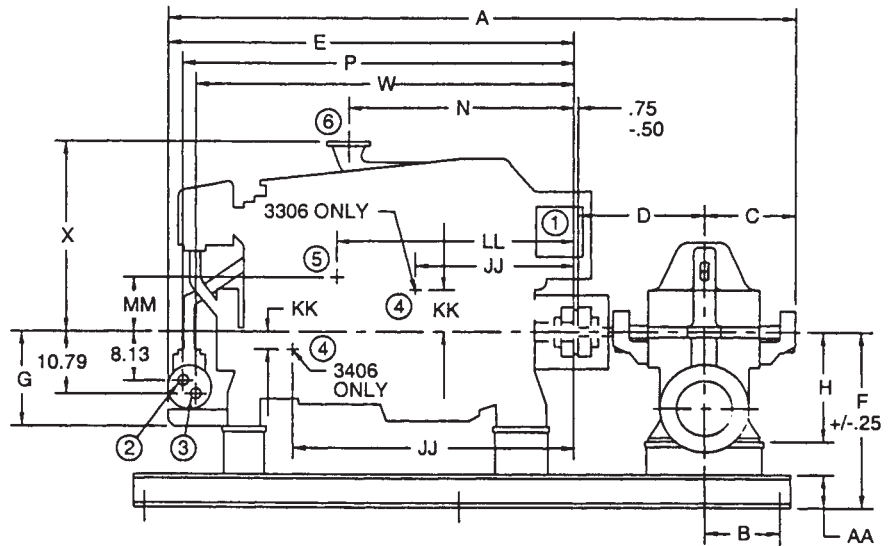
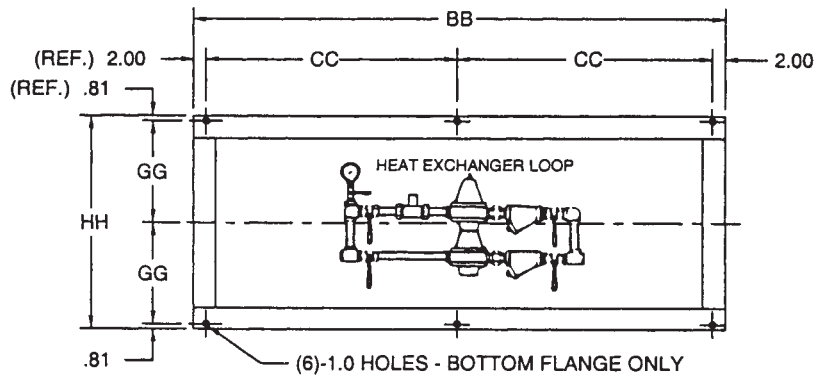


OPTIONAL: BASE MOUNTED CONTROLLER IS MOUNTED WITH DOOR ON REAR. DOOR IS HINGED ON LEFT. ADD 25" TO BB (LENGTH OF BASE) AND 2 ADDITIONAL 1.0 DIAMETER HOLES



CW ROTATION VIEWED FROM COUPLING END



VIEW "A"

Item No.	Description	Engine Model		
		3406 ¹	3408 ²	3412 ³
①	Heater Junction Box	(See Note 6)	View "A" (See Note 6)*	View "A" (See Note 6)
②	Raw Water-Outlet	2.0 NPT	2.0 NPT	2.0 NPT
③	Raw Water-Inlet	2.0 NPT	2.0 NPT	2.0 NPT
④	Fuel Supply Conn.	.38 NPT	.38 NPT View "A"*	.38 NPT View "A"*
⑤	Fuel Return Conn.	.38 NPT	.38 NPT View "A"*	.38 NPT View "A"*
⑥	Exhaust Outlet Conn.	6" Cat. Fig.*	8" Cat. Fig.	See footnote 3

* Far side

1. 3406 Wet Exhaust Conn. - 6" NPT; 3406 Dry Exhaust Conn. - 6" Cat. Fig.

2. 3408 Wet - 6" Cat. Fig.; 3408 Dry - 8" Cat. Fig.

3. 3412-DIT Dry - 8" Cat. Fig.; 3412-DIT Wet - 8" NPT; 3412-DITA Dry - 6" Cat. Fig.; 3412-DITA Wet - 8" NPT



PUMP	ENGINE	PT	A	B	C	D	E	F	G	H	L	M	N	P
12x8x21F	3406B-DIT	1.00	124.9	20.0	21.75	28.25	74.1	29.0	17.0	19.0	21.0	21.0	41.79	69.82
12x8x21F	3406B-DITA	1.00	124.9	20.0	21.75	28.25	74.1	29.0	17.0	19.0	21.0	21.0	41.79	69.82
12x8x21F	3408B-DITA	1.00	116.0	20.0	21.75	28.25	65.2	29.0	17.0	19.0	21.0	21.0	23.29	60.82
12x8x21F	3412-DIT	1.00	129.5	20.0	21.75	28.25	78.7	31.0	17.0	19.0	21.0	21.0	19.89	74.18
12x8x22F	3406B-DIT	1.00	124.9	20.0	21.75	28.25	74.1	29.0	17.0	19.0	21.0	21.0	41.79	69.82
12x8x22F	3406B-DITA	1.00	124.9	20.0	21.75	28.25	74.1	29.0	17.0	19.0	21.0	21.0	41.79	69.82
14x10x20F	3406B-DIT	1.00	129.1	20.0	23.75	30.50	74.1	31.0	17.0	21.0	21.0	19.0	41.79	69.82
14x10x20F	3406B-DITA	1.00	129.1	20.0	23.75	30.50	74.1	31.0	17.0	21.0	21.0	19.0	41.79	69.82
14x10x20F	3408B-DITA	1.00	120.2	20.0	23.75	30.50	65.2	31.0	17.0	21.0	21.0	19.0	23.29	60.82
14x10x20F	3412-DIT	1.00	133.7	20.0	23.75	30.50	78.7	33.0	17.0	21.0	21.0	19.0	19.87	74.18
14x10x20F	3412-DITA	1.00	133.7	20.0	23.75	30.50	78.7	33.0	17.0	21.0	21.0	19.0	19.87	74.18
16x12x23F	3406B-DIT	1.00	129.1	20.0	23.75	30.50	74.1	35.0	17.0	23.0	25.0	25.0	41.79	69.82
16x12x23F	3412-DIT	1.00	133.7	20.0	23.75	30.50	78.7	35.0	17.0	23.0	25.0	25.0	19.87	74.18

PUMP	ENGINE	R	U	W	X	BB	CC	JJ	KK	LL	MM	HH	GG	AA
12x8x21F	3406B-DIT	12.00	12.00	67.17	33.6	130.0	63.0	51.00	3.23	49.88	5.34	40.00	19.19	6
12x8x21F	3406B-DITA	12.00	12.00	67.17	33.6	130.0	63.0	51.00	3.23	49.88	5.34	40.00	19.19	6
12x8x21F	3408B-DITA	12.00	12.00	58.16	44.6	130.0	63.0	.28	4.01	5.10	3.69	45.00	21.69	8
12x8x21F	3412-DIT	12.00	12.00	71.52	44.6	130.0	63.0	.28	4.01	5.10	3.69	45.00	21.69	8
12x8x22F	3406B-DIT	12.00	12.00	67.17	33.6	130.0	63.0	51.00	3.23	49.88	5.34	40.00	19.19	6
12x8x22F	3406B-DITA	12.00	12.00	67.17	33.6	130.0	63.0	51.00	3.23	49.88	5.34	40.00	19.19	6
14x10x20F	3406B-DIT	13.00	13.00	67.17	33.6	130.0	63.0	51.00	3.23	49.88	5.34	40.00	19.19	6
14x10x20F	3406B-DITA	13.00	13.00	67.17	33.6	130.0	63.0	51.00	3.23	49.88	5.34	40.00	19.19	6
14x10x20F	3408B-DITA	13.00	13.00	58.16	44.6	130.0	63.0	.28	4.01	5.10	3.69	45.00	21.69	8
14x10x20F	3412-DIT	13.00	13.00	71.52	44.6	140.0	68.0	.28	4.01	5.10	3.69	45.00	21.69	8
14x10x20F	3412-DITA	13.00	13.00	71.52	25.1	140.0	68.0	.28	4.01	5.10	3.69	45.00	21.69	8
16x12x23F	3406B-DIT	14.00	14.00	71.52	44.6	140.0	68.0	.28	4.01	5.10	3.69	40.00	19.19	6
16x12x23F	3412-DIT	14.00	14.00	71.52	25.1	140.0	68.0	.28	4.01	5.10	3.69	45.00	31.69	8

NOTES

- All Dimensions are inches with $\pm .125"$ tolerance unless otherwise specified.
- Suction and discharge connections per ANSI B16.1. Holes in flanges straddle C .
- Baseplate setting (before piping), grouting procedures and final alignment must be in accordance with ITT A-C Fire Pump Systems recommended procedures outlined in the Instruction Manual associated with this pump type.
- Both suction and discharge pipes must be supported independently near the pump to reduce strain on the pump casing. Also expansion joints, if used must not exert force on casing.
- Coupling guard to meet ANSI/OSHA requirements.
- Heater voltage requirement: 120/240 VAC 3000 Watt. Do not energize until engine coolant has been installed.
- These units are available in both standard and high working pressures. Unit is denoted with an "H" prefix when specifying high working pressure. Example H6x4x11F. Refer to engineering data for actual working pressure values. High pressure pumps have 250 F.F. flanges per ANSI B16.1 unless noted.

NOT FOR CONSTRUCTION, INSTALLATION OR APPLICATION PURPOSES UNLESS CERTIFIED.									
CERTIFIED FOR:								UL FM ULC APPROVAL <input type="checkbox"/> <input type="checkbox"/> <input type="checkbox"/>	
CUSTOMER ORDER NO:				IDENTIFICATION NO:				FLANGES	
PUMP DATA	SIZE	MODEL	CURVE NO.	GPM	HEAD (FT.)	ROTATION	SUCTION	DISCHARGE	
		150				CW			
ENGINE DATA	MAKE	MODEL	HP	RPM	VOLTAGE	POLARITY	MAX ALTITUDE		
	CATERPILLAR					NEG.			
SHOP ORDER:			CERTIFIED BY:			TOTAL WEIGHT		DATE	