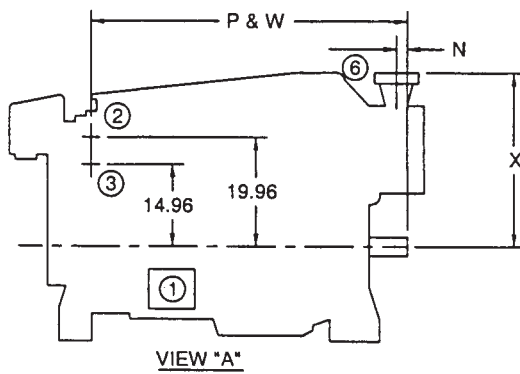
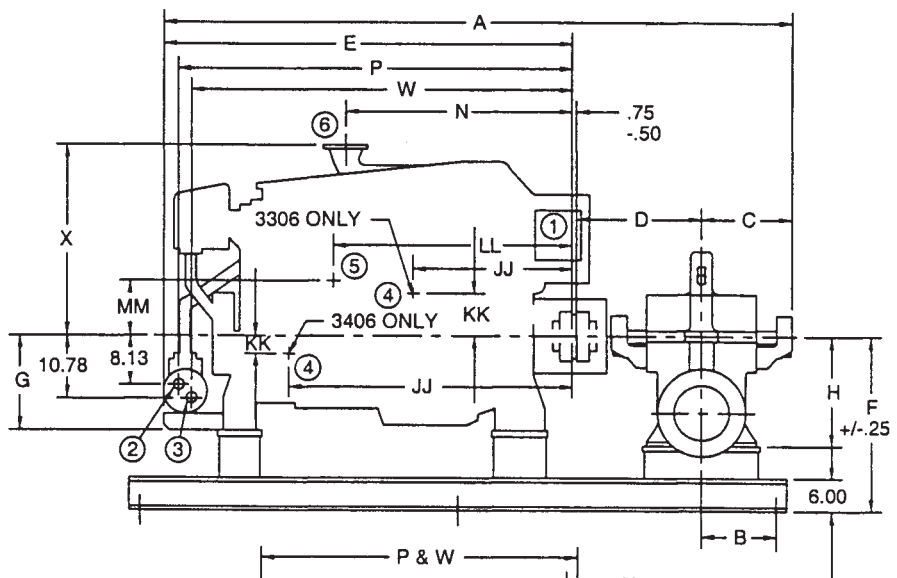
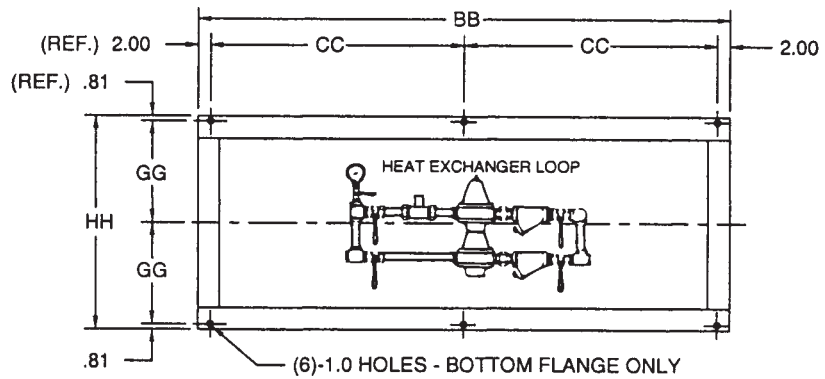
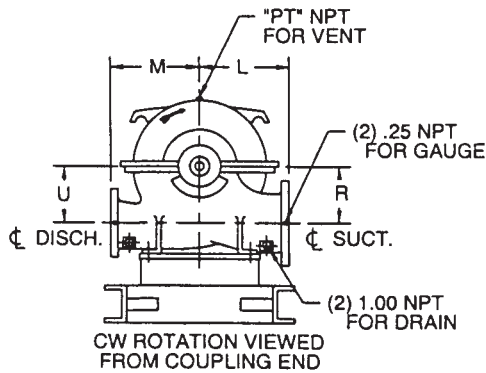


OPTIONAL: BASE MOUNTED
CONTROLLER IS MOUNTED
WITH DOOR ON REAR.
DOOR IS HINGED ON LEFT.
ADD 25" TO BB
(LENGTH OF BASE)
AND 2 ADDITIONAL
1.0 DIAMETER HOLES



Item No.	Description	Engine Model	
		3306	3406 ¹
①	Heater Junction Box	(See Note 6) *	(See Note 6)
②	Raw Water-Outlet	1.5 NPT VIEW "A"	2.0 NPT
③	Raw Water-Inlet	1.5 NPT VIEW "A"	2.0 NPT
④	Fuel Supply Conn.	.75-16"	.38 NPT
⑤	Fuel Return Conn.	.44-20"	.38 NPT
⑥	Exhaust Outlet Conn.	5.0 NPT VIEW "A"	See footnote below

* Far side

1. 3406 Wet - 6" NPT; 3406 Dry - 6" FLG.



FIRE PUMP SYSTEMS
 Dimensions –
 Caterpillar Engines
 Models 3406B-DIT and 3406B-DITA
 Various Pumps

A-C Fire Pump Systems



PUMP	ENGINE	PT	A	B	C	D	E	F	G	H	L	M	N	P
8x6x18F	3406B-DIT	.50	111.7	15.0	15.62	21.25	74.1	27.0	17.0	14.0	16.0	14.0	41.79	69.82
10x8x17F	3406B-DIT	.50	114.4	17.0	17.00	22.56	74.1	27.0	17.0	16.0	18.0	16.0	41.79	69.82
10x8x20F	3406B-DIT	.50	114.4	17.0	17.00	22.56	74.1	29.0	17.0	20.0	20.0	18.0	41.79	69.82
10x8x20F	3406B-DITA	.50	114.4	17.0	17.00	22.56	74.1	29.0	17.0	20.0	20.0	18.0	41.79	69.82
12x10x18F	3406B-DIT	.50	114.4	17.0	17.00	22.56	74.1	29.0	17.0	18.0	20.0	18.0	41.79	69.82
12x10x18F	3406B-DITA	.50	114.4	17.0	17.00	22.56	74.1	29.0	17.0	18.0	20.0	18.0	41.79	69.82

PUMP	ENGINE	R	U	W	X	BB	CC	GG	HH	JJ	KK	LL	MM
8x6x18F	3306B-DITA	9.00	9.00	57.00	25.3	104.0	50.0	14.19	30.00	28.60	7.66	37.86	16.31
8x6x18F	3406B-DIT	9.00	9.00	67.17	33.6	116.0	56.0	19.19	40.00	51.00	3.23	49.88	5.34
10x8x17F	3406B-DIT	10.00	10.00	67.17	33.6	120.0	58.0	19.19	40.00	51.00	3.23	49.88	5.34
10x8x20F	3406B-DIT	14.00	14.00	67.17	33.6	116.0	36.0	19.19	40.00	51.00	3.23	49.88	5.34
10x8x20F	3406B-DITA	14.00	14.00	67.17	33.6	116.0	56.0	19.19	40.00	51.00	3.23	49.88	5.34
12x10x18F	3406B-DIT	11.00	11.00	67.17	33.6	120.0	58.0	19.19	40.00	51.00	3.23	49.88	5.34
12x10x18F	3406B-DITA	11.00	11.00	67.17	33.6	120.0	58.0	19.19	40.00	51.00	3.23	49.88	5.34

NOTES

- All Dimensions are inches with $\pm .125$ " tolerance unless otherwise specified.
- Suction and discharge connections per ANSI B16.1. Holes in flanges straddle $\text{\textcircled{C}}$.
- Baseplate setting (before piping), grouting procedures and final alignment must be in accordance with ITT A-C Fire Pump Systems recommended procedures outlined in the Instruction Manual associated with this pump type.
- Both suction and discharge pipes must be supported independently near the pump to reduce strain on the pump casing. Also expansion joints, if used must not exert force on casing.
- Coupling guard to meet ANSI/OSHA requirements.
- Heater voltage requirement: 120/240 VAC 3000 Watt. Do not energize until engine coolant has been installed.
- These units are available in both standard and high working pressures. Unit is denoted with an "H" prefix when specifying high working pressure. Example H6x4x11F. Refer to engineering data for actual working pressure values. High pressure pumps have 250 F.F. flanges per ANSI B16.1 unless noted.

NOT FOR CONSTRUCTION, INSTALLATION OR APPLICATION PURPOSES UNLESS CERTIFIED.												
CERTIFIED FOR:							APPROVAL			UL <input type="checkbox"/>	FM <input type="checkbox"/>	ULC <input type="checkbox"/>
CUSTOMER ORDER NO:				IDENTIFICATION NO:				FLANGES				
PUMP DATA	SIZE	MODEL	CURVE NO.	GPM	HEAD (FT.)	ROTATION	SUCTION	DISCHARGE				
		150				CW						
ENGINE DATA	MAKE	MODEL	HP	RPM	VOLTAGE	POLARITY	MAX ALTITUDE					
	CATERPILLAR					NEG.						
SHOP ORDER:			CERTIFIED BY:			TOTAL WEIGHT			DATE			