



# ITT

## A-C FIRE PUMP SYSTEMS

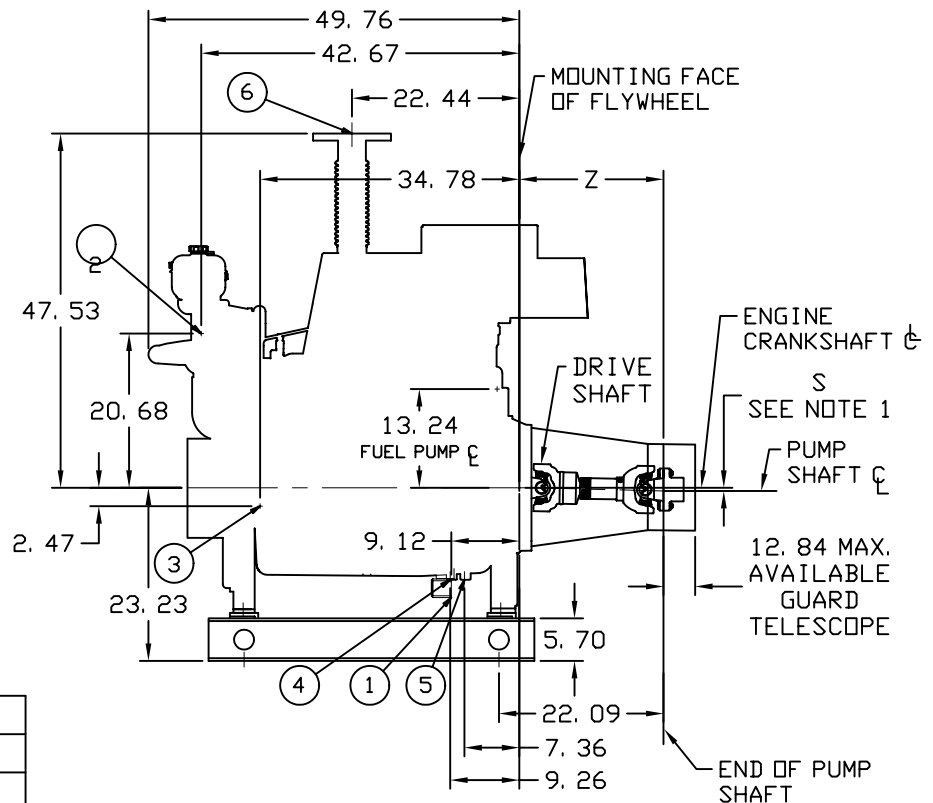
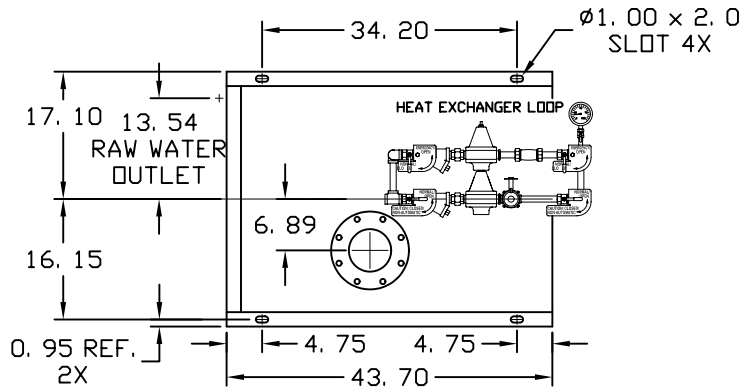
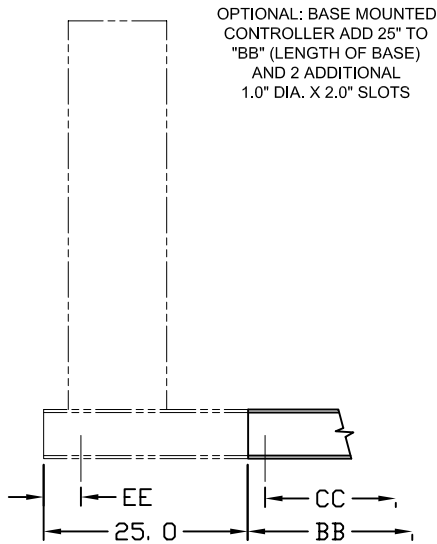
Dimensions – Clarke Fire Protection Products  
 Engine Model – JW6H SERIES TIER 3  
 Vertical Turbine Fire Pumps

**FP 2.3**

Page 413

February 09

Supersedes all previous issues



**NOTES**

1. All dimensions in inches.

**Caution**

The driveshaft is designed to operate at a 2° angle with the input and output shafts in parallel. The engine crankshaft is to be set with a parallel offset of "S" ±0.10 inches vertically above the pump shaft and 0.00"±0.10 inch parallel offset horizontally right or left of the pump shaft. Refer to engine installation manual for alignment instructions.

2. Baseplate setting (before piping), grouting procedures and final alignment must be in accordance with ITT A-C Fire Pump Systems recommended procedures outlined in the Instruction Manual associated with this pump type.

3. Heater voltage requirement: 115 VAC 1500 WATT, 230 VAC optional. Do not energize until engine coolant has been installed.

Item No.	Description	Remarks
		JW6H-UFAD80
⑥	Exhaust Outlet Conn.	6" 125# Flange
⑤	Fuel Supply Conn.	1/2" NPTF Farside
④	Fuel Return Conn.	3/8" NPTF Farside
③	Raw Water-Inlet	1-1/4" NPTF
②	Raw Water-Outlet	1 1/4" NPTF
①	Heater Junction Box	See Note 6

X	Engine Model	Driveshaft Model	UL STATUS	S	Z
	JW6H-UFAD80 (<2100 RPM)	CDS50-SC	LISTED	0.45	20.38
	JW6H-UFAD80 (<1760 RPM)	SC81A*	NONLISTED	0.45	20.38

\*NO LISTED DRIVESHAFT AVAILABLE IN THIS RPM RANGE.

**NOT FOR CONSTRUCTION, INSTALLATION OR APPLICATION PURPOSES UNLESS CERTIFIED.**

<b>CERTIFIED FOR:</b>							<b>APPROVAL</b>		
							UL	FM	ULC
							<input type="checkbox"/>	<input type="checkbox"/>	<input type="checkbox"/>
<b>CUSTOMER ORDER NO:</b>				<b>IDENTIFICATION NO:</b>			<b>FLANGES</b>		
<b>PUMP DATA</b>	<b>SIZE</b>	<b>MODEL</b>	<b>CURVE NO.</b>	<b>GPM</b>	<b>HEAD (FT.)</b>	<b>ROTATION</b>	<b>SUCTION</b>	<b>DISCHARGE</b>	
						CW			
<b>ENGINE DATA</b>	<b>MAKE</b>	<b>MODEL</b>	<b>HP</b>	<b>RPM</b>	<b>VOLTAGE</b>	<b>POLARITY</b>	<b>MAX ALTITUDE</b>		
	CLARKE					NEG.			
<b>SHOP ORDER:</b>			<b>CERTIFIED BY:</b>			<b>TOTAL WEIGHT</b>		<b>DATE:</b>	