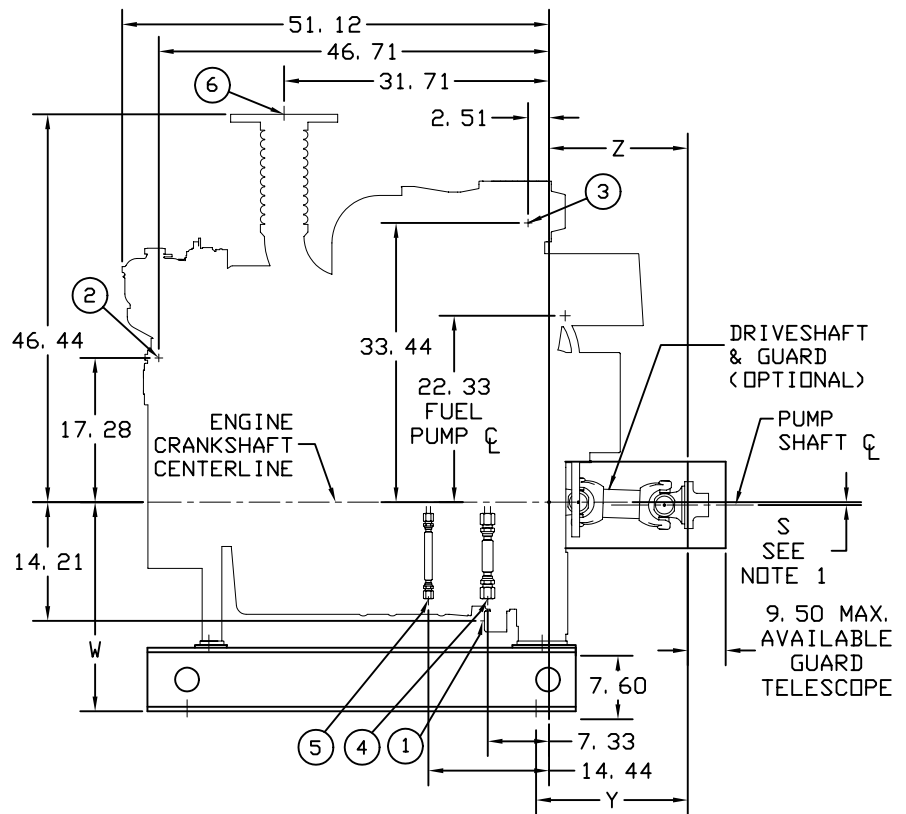
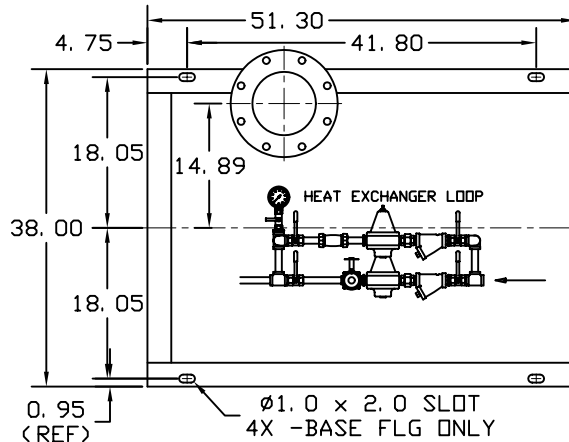
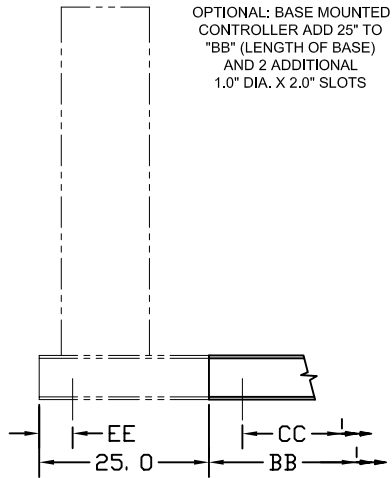




February 09

Supersedes all previous issues



**NOTES**

1. All dimensions in inches.

**Caution**

The driveshaft is designed to operate at a 2° angle with the input and output shafts in parallel. The engine crankshaft is to be set with a parallel offset per the table below  $\pm 0.10$  inches vertically above the pump shaft and  $0.00 \pm 0.10$  inch parallel offset horizontally right or left of the pump shaft. Refer to the engine installation manual for alignment instructions.

2. Baseplate setting (before piping), grouting procedures and final alignment must be in accordance with ITT A-C Fire Pump Systems recommended procedures outlined in the Instruction Manual associated with this pump type.

3. Heater voltage requirement: 115 VAC 1500 WATT, 230 VAC optional. Do not energize until engine coolant has been installed.

Item No.	Description	Remarks
		JX6H-UFADF0, JX6H-UFAD60 JX6H-UFADK0, JX6H-UFADN0 JX6H-UFADP0, JX6H-UFAD88
⑥	Exhaust Outlet Conn.	8" 150# FLG.
⑤	Fuel Return Conn. (Shipped Loose) (Flexible Hose) (Farside)	1/2" NPTF Farside
④	Fuel Supply Conn. (Shipped Loose) (Flexible Hose) (Farside)	3/4" NPTF Farside
③	Raw Water-Inlet (Pre-Piped)	1-1/4" NPTF
②	Raw Water-Outlet	1-1/4" NPTF
①	Heater Junction Box	See Note 6

X	Engine Model	Driveshaft Model	UL STATUS	S	Z
	JX6H-UFADF0	SC2140*	NONLISTED	0.35	17.50
	JX6H-UFADK0, NO, PO, 60	SC2155*	NONLISTED	0.35	17.50
	JX6H-UFAD88	SC2160*	NONLISTED	0.45	20.38

\*NO LISTED DRIVESHAFT AVAILABLE IN THIS RPM RANGE.

NOT FOR CONSTRUCTION, INSTALLATION OR APPLICATION PURPOSES UNLESS CERTIFIED.

CERTIFIED FOR: APPROVAL  UL  FM  ULC

CUSTOMER ORDER NO: IDENTIFICATION NO: FLANGES

PUMP DATA	SIZE	MODEL	CURVE NO.	GPM	HEAD (FT.)	ROTATION	SUCTION	DISCHARGE
							CW	

ENGINE DATA	MAKE	MODEL	HP	RPM	VOLTAGE	POLARITY	MAX ALTITUDE
		CLARKE					NEG.

SHOP ORDER: CERTIFIED BY: TOTAL WEIGHT DATE: