



ITT

Supersedes all previous issues

DOUBLE WALL FUEL TANK

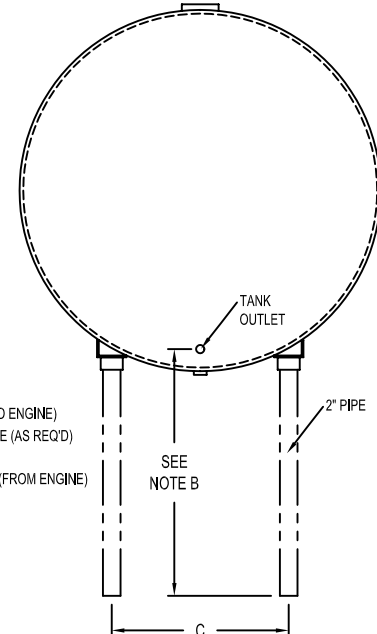
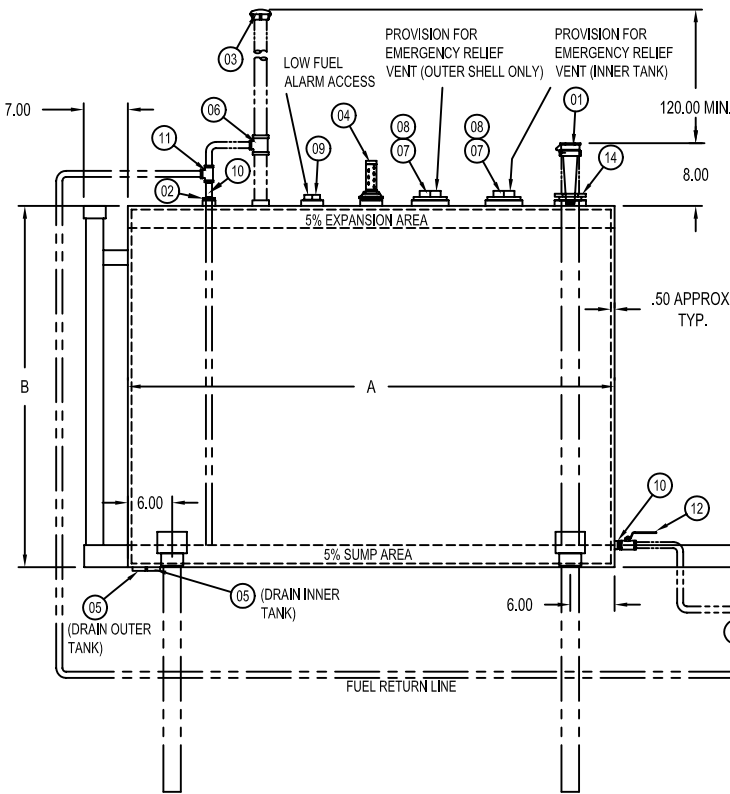
CAPACITY	120, 185, 300, 500, 700, & 900 GAL		
TYPE	DOUBLE WALL TYPE I 360°, ABOVEGROUND, HORIZONTAL		
MATERIAL	MILD CARBON STEEL		
TEST	5 PSI		
MIN GAUGE ATM	INNER HEADS: 12 GA	OUTER HEADS: 10 GA	
	INNER SHELL: 12 GA	OUTER SHELL: 10 GA	
PAINT	INTERIOR: NONE	EXTERIOR: GREY PRIMER	
CONSTRUCTION	FLAT FLANGED HEADS LAP, WELD ALL EXTERIOR SEAMS ONLY		
APPROVAL	UL 142		

NOTES

- (A) ITEMS DISPLAYED IN PHANTOM LINES FURNISHED BY OTHERS TO CONFORM TO INDIVIDUAL JOB REQUIREMENTS
- (B) INSTALL TANK IN ACCORDANCE WITH REQUIREMENTS OF LOCAL AUTHORITIES. ARRANGE TANK AS CLOSE TO ENGINE AS POSSIBLE AND LOCATE TANK OUTLET ABOVE FUEL PUMP CENTERLINE
- (C) PITCH TANK TOWARD DRAIN .25" PER FOOT
- (D) FOR PROPER FUEL SUPPLY AND RETURN SIZE SEE ENGINE MANUFACTURER'S RECOMMENDATION

TANK SIZE (GAL)	A	B	C	F	WT
120	41.00 (1041.4)	31.00 (787.4)	24.00 (609.6)	3.00 (76.2)	295
185	40.00 (1016)	39.00 (990.6)			380
300	60.00 (1524)				705
500	65.00 (1651)	49.00 (1244.6)	4.50 (114.3)	4.50 (114.3)	970
700	90.00 (2286)				1600
900	115.00 (2921)				1900

ITEM	QTY	DESCRIPTION
1	1	2" FILL CAP - WITH PROVISIONS FOR PADLOCK, COMBINED WITH REMOVABLE STRAINER (MAX .06 MESH)
2	1	DOUBLE TAB BUSHINGS, 1" X .50"
3	1	VENT CAP, 2.0" NPT
4	1	DIRECT READING TANK GAUGE, 2" NPT
5	2	PIPE PLUG, 1" NPT
6	1	PIPE TEE, 2.0" x 2.0" x 0.50"
7	2	PIPE PLUG, 4" NPT (120 - 500 GAL)
8	2	PIPE PLUG, 6" NPT (700 - 900 GAL)
9	1	PIPE PLUG, 2" NPT
10	2	PIPE NIPPLE, .50" x .50" x .50"
11	1	PIPE TEE, .50" x .50" x .50"
12	1	STOP COCK, .50" NPT - WITH PROVISION FOR PADLOCK
13	2	FLEXIBLE HOSE (SUPPLIED WITH ENGINE)
14	1	DOUBLE TAP BUSHING, 3" x 2"



NOT FOR CONSTRUCTION, INSTALLATION OR APPLICATION PURPOSES UNLESS CERTIFIED		
CERTIFIED FOR:		
CUSTOMER ORDER NO.:	TAG NO.	
SHOP ORDER:	CERTIFIED BY:	DATE:

DIMENSIONS IN INCHES (mm)