

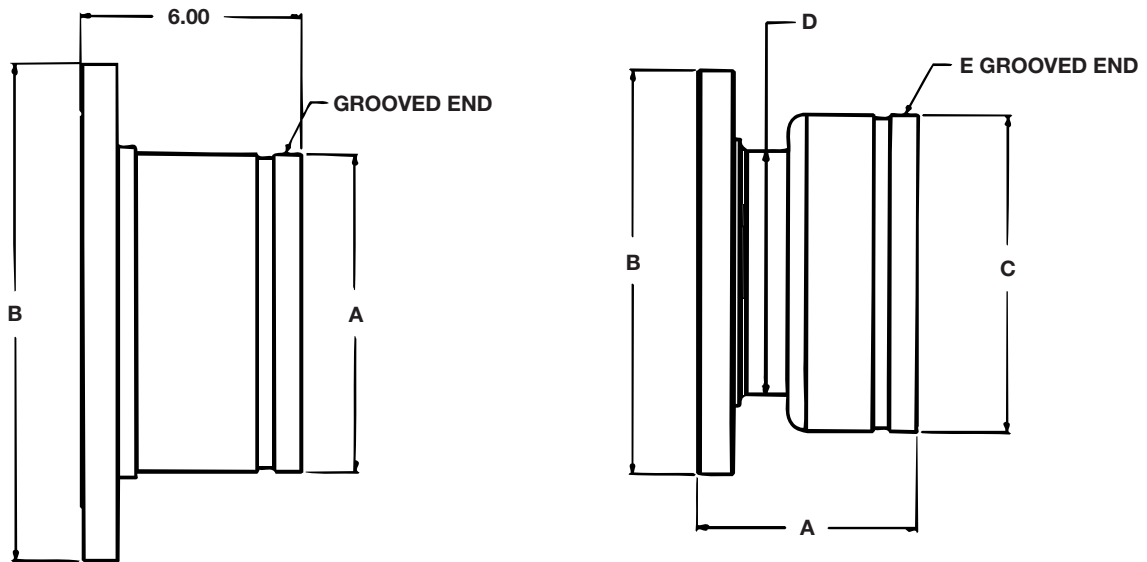


February 08

Supersedes all previous issues

## DISCHARGE FLANGE ADAPTOR

**CONNECTION** 150# CLASS FLANGE x GROOVE  
**MATERIAL**  
**PIPE** ASTM A-53 GR. B, STD. WEIGHT  
**FLANGE** 150# F.F., ASTM - 105 & ANSI B16.5  
**MAX W.P.** 300 PSI



SIZE	A	B	C	D	E	WT (lbs)
4 x 4	4.500 (114.3)	9.000 (228.6)				20
4 x 6	5.000 (127)	9.000 (228.6)	6.625 (168.275)	4.500 (114.3)	6.000 (152.4)	20
6 x 6	6.625 (168.275)	11.000 (279.4)				30
6 x 8	6.000 (152.4)	11.000 (279.4)	8.625 (219.075)	6.625 (168.275)	8.000 (203.2)	30
8 x 8	9.625 (244.475)	13.500 (342.9)				45
8 x 10	6.500 (165.1)	13.500 (342.9)	10.750 (273.05)	8.625 (219.075)	10.000 (254)	45

<b>NOT FOR CONSTRUCTION, INSTALLATION OR APPLICATION PURPOSES UNLESS CERTIFIED</b>		
CERTIFIED FOR:		
CUSTOMER ORDER NO.:	TAG NO.	
SHOP ORDER:	CERTIFIED BY:	DATE: